

WorkAny is a remote employee monitoring & time tracking solution. It helps to,

- Enhance accountability, efficiency, and productivity.
- Centralized platform for task managing & communicating.
- Real-time analytics drive data-driven decision-making.
- Optimize resource allocation and drive operational excellence.

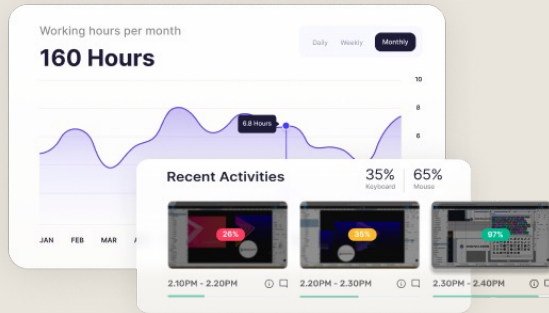




WHAT WORKANY OFFERS

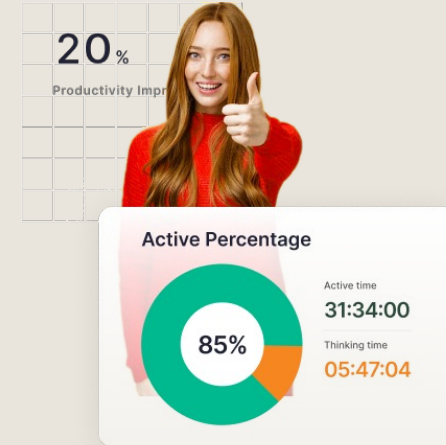
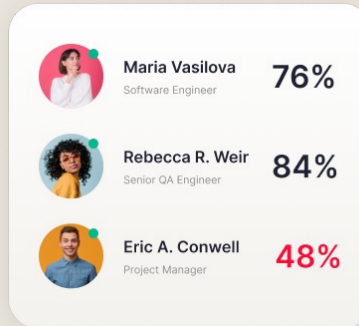
Maximize efficiency:

Minimize distractions, automate tasks, optimize time for work-life balance and productivity.



Data Driven Analytics:

Analytics, reports, trends, metrics for informed decisions and continuous improvement.



Achieve Impartial Assessments:

Boost productivity, reduce distractions, automate tasks, optimize time, assess employees.



WORKANY FEATURES

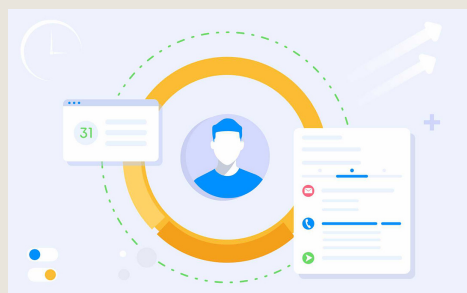
Actionable analytics, detailed reports, task automation, time management optimization, and productivity enhancement for better decision-making and efficiency.





HOW WORKANY CAN HELP BUSINESS

- Efficient Time Tracking
 - Improved Productivity
 - Enhanced Accountability
 - Remote Team Collaboration
 - Elimination of manual tracking
 - Accurate billing and payroll
- Performance Insights and Feedback
 - Regulatory Requirements
 - Data-driven Decision Making
 - Flexibility and Remote Work Support
 - Improved project management
 - Compliance and transparency



Optimizes Resource Allocation



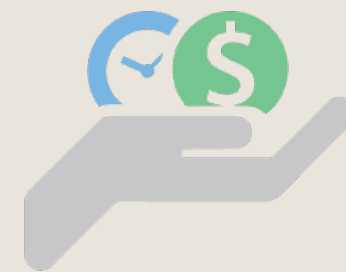
Reduces Administrative Overhead



Improves Project Efficiency



Enhances Transparency



Significant Cost & Time Savings

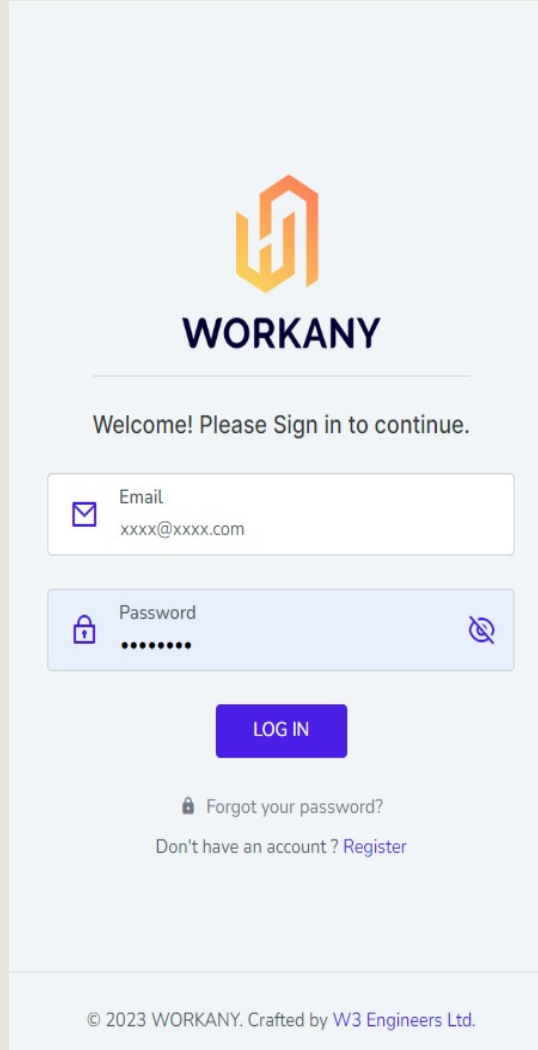


Step 1.

Administrator will get Login Credential

Onboarding Process

- Workflow of the application is rather simple and intuitive



The screenshot shows the Workany login interface. At the top is the Workany logo, consisting of an orange stylized 'W' above the word 'WORKANY' in dark blue. Below the logo is the text 'Welcome! Please Sign in to continue.' There are two input fields: 'Email' with a placeholder 'xxxx@xxxx.com' and 'Password' with a masked password '.....'. A purple 'LOG IN' button is centered below the fields. Below the button are links for 'Forgot your password?' and 'Don't have an account ? Register'. The footer contains the copyright notice '© 2023 WORKANY. Crafted by W3 Engineers Ltd.'

Spend less time tracking and more time growing.

The all-in-one time tracker for teams.



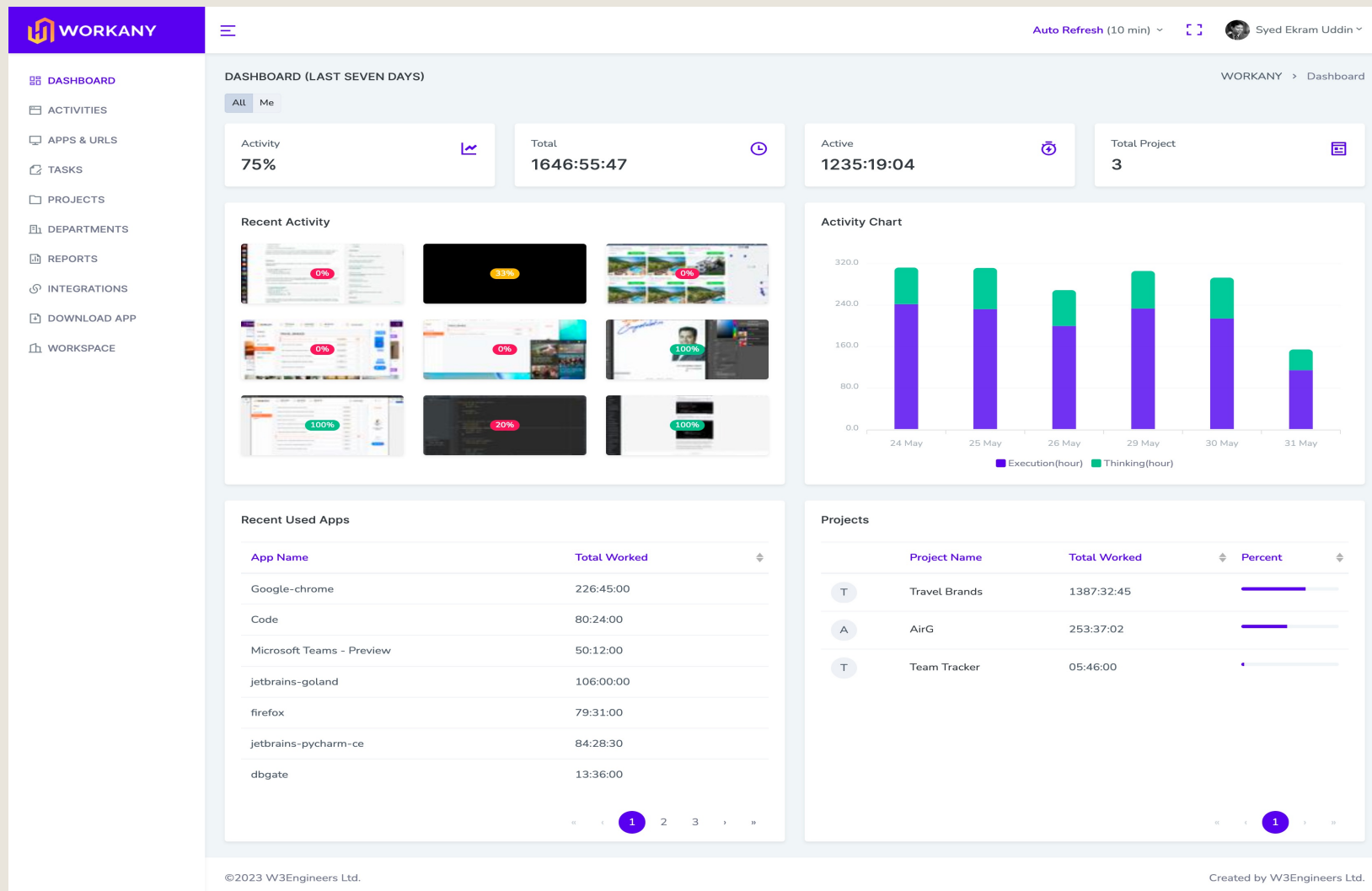


Step 2.

Employees are Added onto Projects by the Administrator.

Onboarding Process

- Workflow of the application is rather simple and intuitive



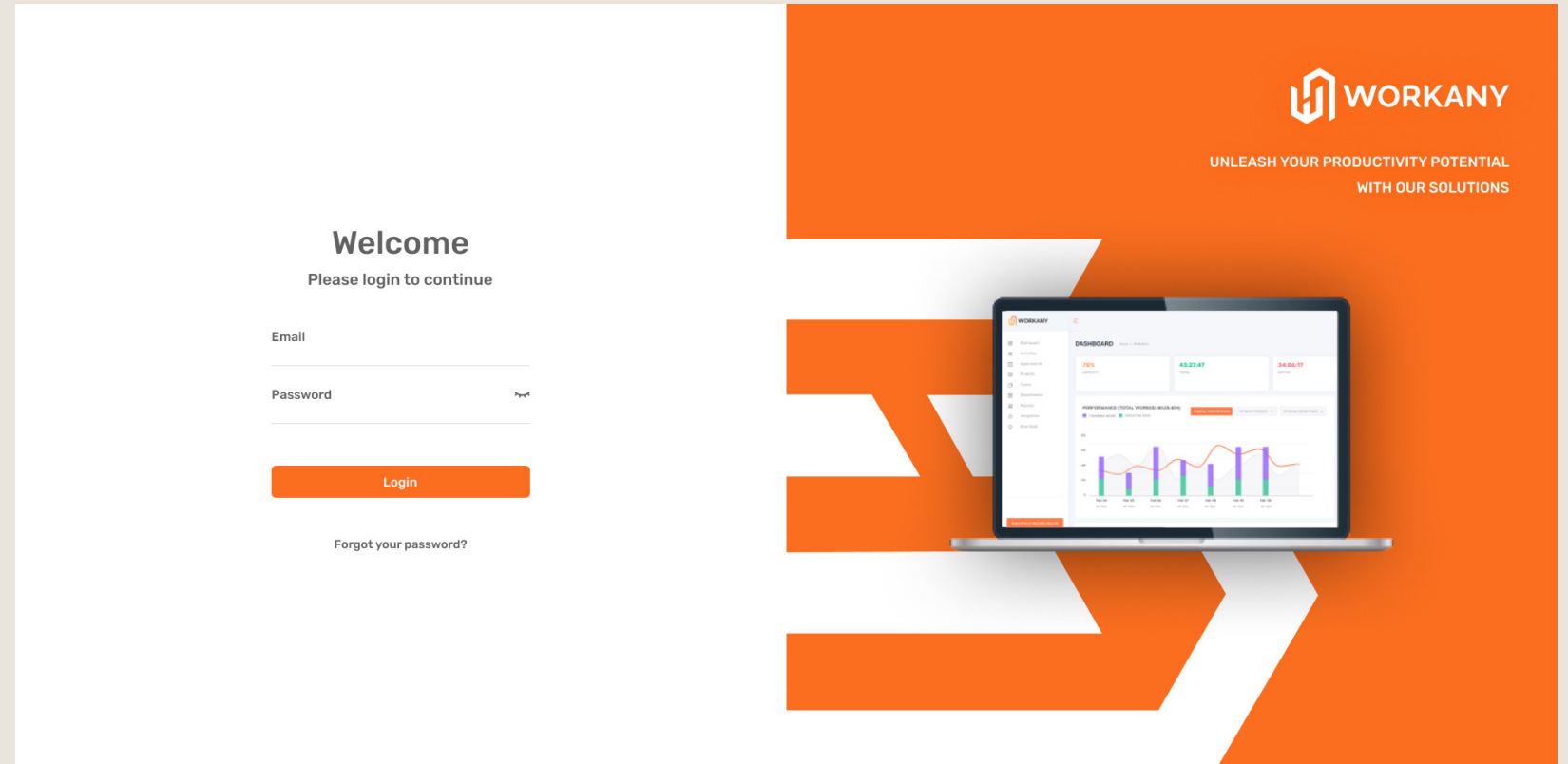


Step 3.

Employee's Login with their Credentials and Install our Desktop App.

Onboarding Process

- Workflow of the application is rather simple and intuitive



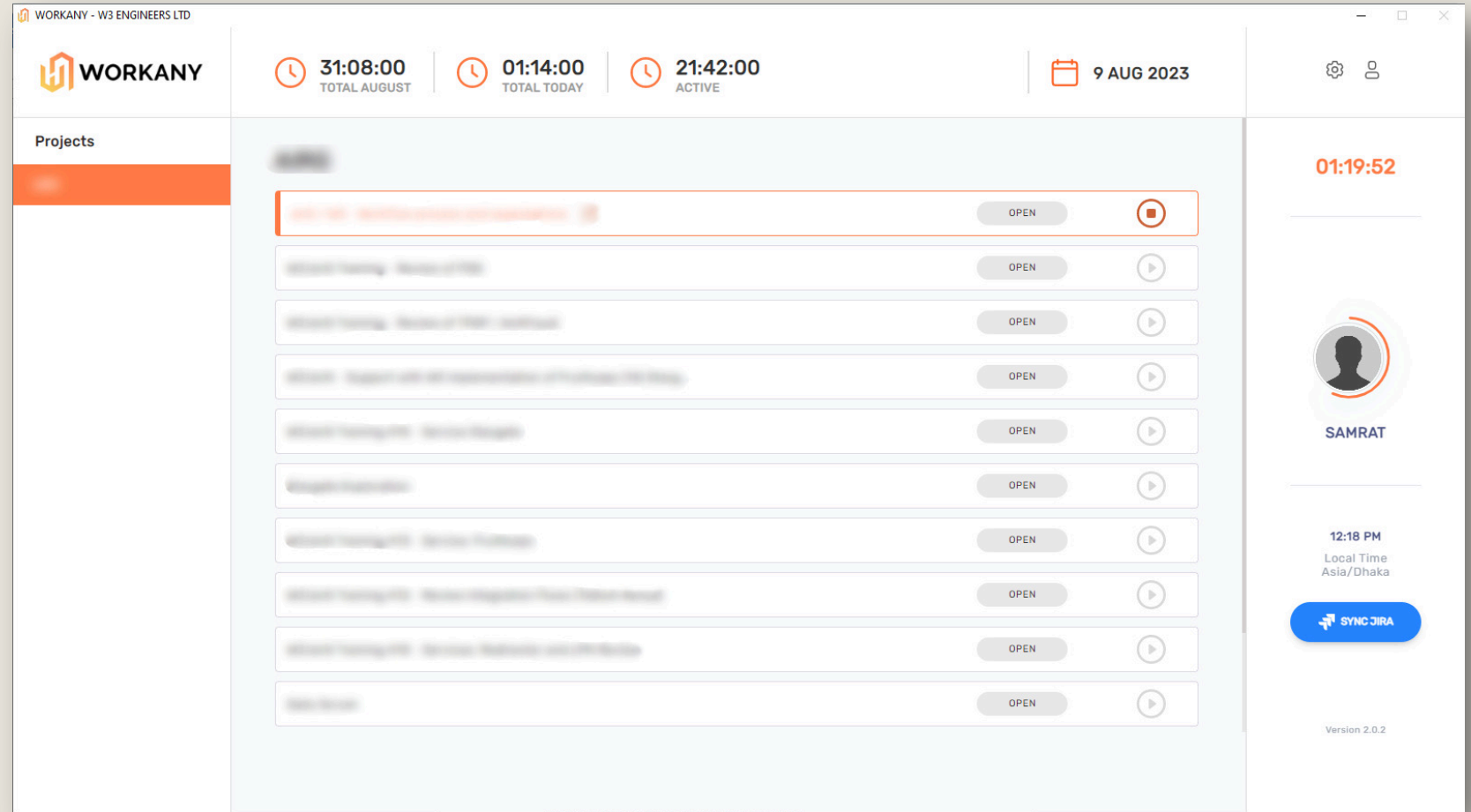


Step 4.

Employees put in their tasks of the day into the application and start tracking the tasks.

Onboarding Process

- Workflow of the application is rather simple and intuitive



INDUSTRIES THAT WORKANY SERVING

- Remote Workforce Companies
- IT and Software Development Companies
- Consulting and Professional Services Firms
- Marketing and Creative Agencies
- Construction and Field Service Companies
- Call Centers and Customer Support Centers





SOME OF OUR NOTABLE CLIENTS



W3 Engineers Ltd.

BiMotion





PRICING MODEL

WorkAny offers a cost-effective and budget-friendly pricing model, ensuring affordability without compromising on quality and features.



3/employee/Month
(Paid Annually).



5/employee/month
(Paid Monthly)



0/all employees for one
month trial



WorkAny Inc.

Office: 24-2325 Ranger Lane, Port Coquitlam, BC,
Canada

web: <https://workany.io>

Email: info@workany.io

Telephony: +1.604.506.9009